

DECEMBER 2021

A BIG HELLO TO ALL OUR CLIENTS

2021, The year of covid, cancellations and commodities.

It has been for us at Blackdale another whirlwind year both on and off farm.

We have like many, seen an ever uncertain world with covid and various laws passed impacting events, social lives, schooling and really the new normal is - NOTHING IS NORMAL. We feel truly privileged to be on a farm, have plenty of space, jobs to do and products in demand.

The freedoms we have always had are now under threat and that is of concern, it will be an interesting 2022 if the tolerance of government decree by kiwis fades like it has in many other countries. The highlight of 2021 must be the rise of lamb and mutton pricing, what shipping and labour impacts on these new super levels is yet to be seen, but the real deal is that consumers will pay for high quality red meats. Like every season when the numbers roll in the price will drop, how much and how fast is the unknown. On farm cost pressures are also bloody strong at present and my expectation is 2022 maybe the highest cost rises since 1986/1987 in terms of on farm inflation. Given this and the multitude of challenges facing the rural sector including a tsunami of local and central government B.S. regulations it is great to have common sense buggers like Groundswell to awaken the country to concerns and call for better debate about our futures and practical applications of various policy demands.

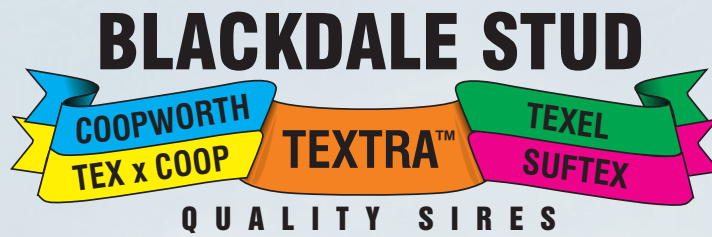
It will be interesting heading into 2022 to see how the team of 5 million behaves. New Zealand as a whole needs to think carefully about how it's funded, what values it holds dear and what equality really means.



Sunset over home



www.blackdalestud.co.nz



Right now New Zealand's leadership is doing its best to reduce export income, has very mixed values and is doing a good job **growing division not unity**, Bad and Sad. Being a farmer means I'm naturally optimistic this can be changed, the right seeds need to be planted and some better national management would help.

The farm workers on Blackdale have changed abit over this year, Wendy and I have taken the reins of all studs and stock. Peter and Marion are always keen to assist and that back up is good to have. Son Daniel left in April to get experience on dry land farming on a larger scale and seems to be enjoying the 30,000su property in the Hakataramea Valley.

We had a good number of applicants for a full-time staff member, and in July Holly Macpherson started with us, fair to say she is very impressed with our consistent natural irrigation system. Holly has overseas farming experience, as well as various NZ farming and grew up in Waianiwa, Southland.

Grace Frahm assisted for lambing, tagging and tailing. Grace hails from Oxford and has a small Poll Dorset stud. She is keen to go farming at 19 and we hope the experience from Blackdale builds on her knowledge, now back in Canterbury Grace is looking for farming opportunities within the sheep industry.

RAM ORDERS FOR 2022

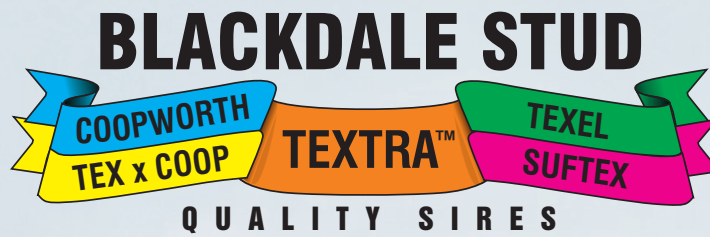
Please return your order form by **30 December 2021** using the enclosed reply paid envelope or emailing to blackdale70@gmail.com . Phone orders are welcome on 021 855 106 or try evenings on (03) 224 6106. Please indicate the number of rams required and the preferred price option. Also indicate any special requirements we could help you with.

We intend to start private selling for two tooth rams in late January/early February while ram hoggets will be offered in March after scanning.

Due to modern technology and as cheques are now history the discount offer we had is very difficult to monitor and while many were very prompt with payment it has been increasingly common for clients just to online pay on the 20th of the month accounts. A decision has been to keep it fair for all that all accounts are now just payable 20th of the month. Clients with purchases of 10 years plus will be offered an automatic 5% off their purchases.

For 2022, we will be making 5 x \$1000 cash promotion to 5 lucky clients. These will be draw in May from all client purchases in 2022.





RAM FAIRS

The Southern Texel Breeders Ram Fair will be held at the Gore A&P Showgrounds on Tuesday 18th January 2022 with selling commencing at 1.30pm. Inspection is prior. We are putting forward some very top buys with a couple we used as ram hoggets in the stud.

BRUCellosIS ACCREDITATION

Blackdale remains brucellosis free following our annual blood tests.

LAMBING 2021

Another difficult Spring across the south with winter like conditions, that's 3 years in a row where mother nature has mixed up the timing of winter verses spring. Ongoing wet conditions right up to late November have severely curtailed growth and the lack of sun has reduced the normal glow and sap of lambs.

<u>Breed</u>	<u>Scan</u>	<u>Tailed</u>
Texel	186%	163%
Texel Suffolk	190%	168%
TxC	193%	171%
Textra	195%	173%
Flocks	190%	159%



* Note The flocks were in more exposed areas and 2ths in particular took a beating from the weather.

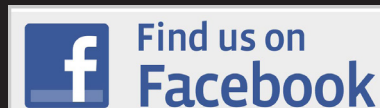
Our first drafts born early September drafted mid November (Av 64 days) have done mid 17kgs at about \$9/kg, we have gone a week early with the untailed singles as concern about space and lack of feed changed usual practice.

The ability of high dress out high growth lambs really does make that possible. Farmers whose sheep genetics are poor in this regard miss out on that ability to off load earlier and they will lose money as schedules drop or likely be forced into store markets.

BLACKDALE CONTACT DETAILS

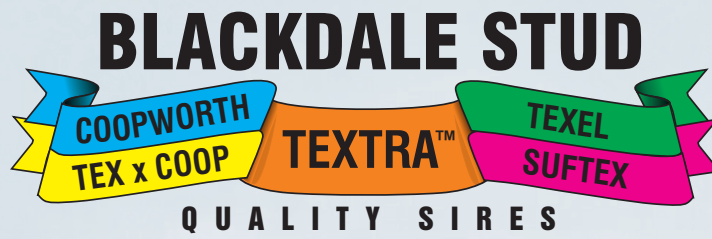
EMAIL: blackdale70@gmail.com

WEBSITE: www.blackdalestud.com



FACEBOOK: Blackdale Stud





LIFE ON THE FARM – A BRIEF PICTORIAL 2021



The gang shifting sheep



Moving stock up lanes



Frankie and his kill



Shorn ewes on hay



Pregnancy scanning - Wilson, Leon and Wendy



BLACKDALE STUD

COOPWORTH
TEX x COOP

TEXTRA™

TEXEL
SUFTEX

QUALITY SIRES

LIFE ON THE FARM – A BRIEF PICTORIAL 2021



Daniel and Charlie



Tailing time



Marion in crowd at Groundswell protest



Grading 2020
Daniel, Peter & Marion



Pourakino Catchment Group
stream walk



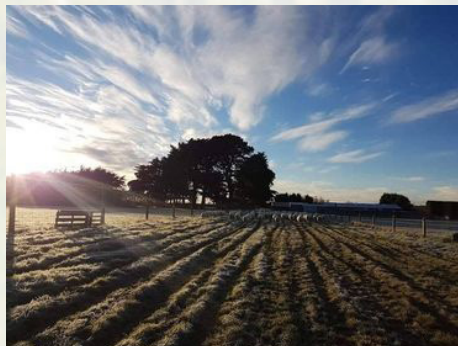
Haymaking early 2021



Brother Muzza home from
Zimbabwe early 2021 and helping out



Ducksville

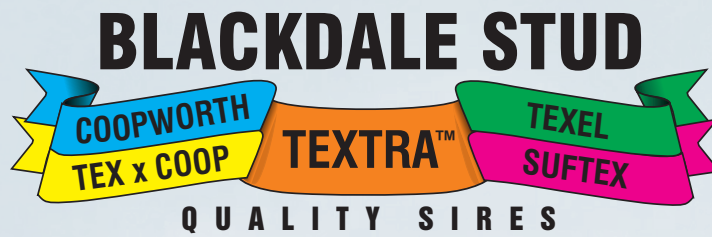


Early Winters Morning



USA Embassy staff visit





NO ACCIDENT

NZGE Tracking Top Genetics Maternal Worth with Meat. It's no accident to have high performing genetics, the industry measures, analyses and reports outcomes. In the November report of 1971 maternal sires of all breeds in NZ with progeny records over last 3 years the top 200 rams are publicly listed. Blackdale Sires make up 46 of the top 200 with another 20 sons of Blackdale rams in flocks North and South Island. **That's a third of the top maternal sires of all breeds in NZ being genetics from this flock, including 9 of the top 20 sires.** One of the TxC ram hoggets we used this year from a low meth sire, is the first in NZ to index over 6000.

GHG

Despite the fact we disagree with the politics of it all, our investment into clean burning engines (low meth rumen genetics) continues. Wendy and I were surprised and humbled to be awarded Environment Southland's Community Award for Leadership in Farming for this work. There are many folks we know who are doing incredible work on behalf of the rural community and environment so it was very humbling to get the award at the 25th Anniversary event.

The good news is we are pretty sure we can show significant reductions and we encourage everyone to have a look at your farm GHG Calculator, this stuff is having a real effect on NZ Ag and will get even more so in coming years. Being up with the play gives us at least a chance to debate with some knowledge.

Wendy and I would sooner invest 20K a year in this sort of R&D which will benefit you our clients than buy a radio station or mail out glossy rags. We hope clients understand this, it's our intention to have GHG listed genetics by 2025 so that farmers can breed into flocks by 2030 to meet the industry agreed 10% reductions.



Double the rain



BLACKDALE STUD

COOPWORTH
TEX x COOP

TEXTRA™

TEXEL
SUFTEX

QUALITY SIRE S

MOVING ON

It's with some sadness and a reflection of market conditions but after 51 years the Coopworth stud is being interbred into our Texel x Coopworth (TxC) programme.

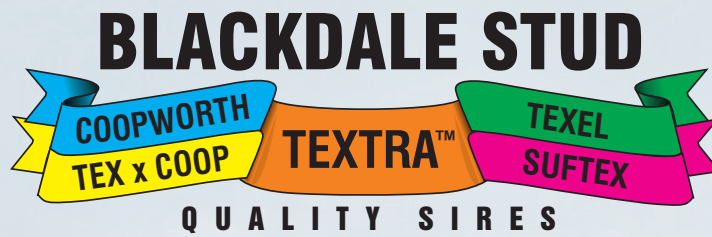
All ewes this year were mated to TxC rams meaning $\frac{3}{4}$ type progeny and over the next few years will be 50/50. The foundation of Coopworth's high lambing, good mothering and heavy strong wool was and is a great feature of the breed. Some 10 years ago the Coopworth Society changed the rules of what a Coopworth can be effectively allowing it to be 25% any white faced thing, in my view a composite.

With both the loss of heavy flat land to cows and the wool market crash Coopworths base areas have changed, the TxC and Textra genetics clear lambs some 40 days faster, have higher meat yields, are clean on bum and on points, have a better tolerance to feed and management variations.

I know a few clients who will be sad not to see Coopworths here but most Coopworths now in the market are actually a composite cross of either Texel, Finn, East Friesian, Poll Dorset, Romney etc etc.

The concept of breeding performance genetics based on measured selection has and will not change, in this way the spirit of the Coopworths development will go on.





GDF9 EWE LAMBS FOR SALE THIS YEAR

We should have 300 extra (over normal numbers) ewe lambs for sale in February, bred from double copy Texel X Coop GDF9 ram hoggets - this gene continues to show very positive reproduction rates and our GDF9 ewes in both Texel and TxC flocks have a significant lift in lambing over those without, equal to a little East Friesian gene like in our Textra flock.

Also we have had some enquiries for MA ewes from clients so please give me a bell if you are selling or looking for good Blackdale based ewes. We are happy to help clients if we can in this manner.

We always welcome communication with our clients so please get in touch if you'd like to have a chat. If you haven't already be sure to have a look at the Blackdale website and facebook page. Our facebook page continues to get more and more followers and likes. We try to keep this up to date and relevant to what we are doing. Any ideas of what you would like to see there let us know.

From everyone at Blackdale we wish our clients and their families a very safe and Merry Christmas and a very happy New Year. All the very best for a settled and successful season and we look forward to seeing you in the coming months.

Kind regards

Leon, Wendy, Peter and Marion

For orders and enquiries please contact:

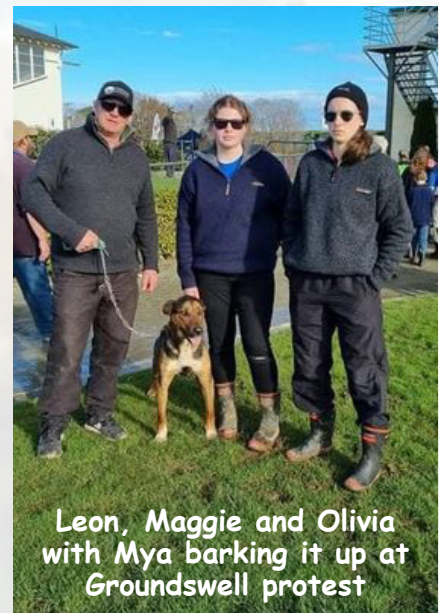
Leon and Wendy

Phone: (03) 224 6106

Leon Cell No: 021 855 106

Wendy Cell No: 021 484 514

Email: blackdale70@gmail.com

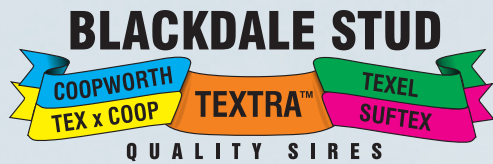


Leon, Maggie and Olivia
with Mya barking it up at
Groundswell protest



Frosty Morning





RAM ORDER FORM

Please return by 30 December 2021

NAME: _____

EMAIL: _____ PHONE: _____

NZ ELITE SIRES (TOP 5% IN NZ)

Maternal Breed \$1500 Coopworth Texel Texel x Coopworth Textra

No of rams required: _____

COOPWORTH ORDERS - No. of Rams required: _____

Price bracket requested (range \$600-\$1250): _____

TEXEL ORDERS - No. of Rams required: _____

Price bracket requested (range \$600-\$1250): _____

TEXEL X COOPWORTH ORDERS - No. of Texel x Coopworth two tooth rams required _____

Price bracket requested (range \$600-\$1250): _____

TEXTRA ORDERS - No. of two tooth rams required: _____

Price bracket requested (range \$600-\$1250): _____

TEXEL X SUFFOLK ORDERS - No. of Texel x Suffolk two tooth rams required: _____

Price bracket requested (range \$600-\$800): _____

RAM HOGGETS FOR MARCH PICK-UP

No. of Pure Texel Ram Hoggets required: _____

Price bracket requested (\$500-\$700): _____

No. of Texel x Coopworth Ram Hoggets required: _____

Price bracket requested (\$500-\$700): _____

No. of Textra Ram Hoggets required: _____

Price bracket requested (\$500-\$700): _____

No. of Texel x Suffolk Ram Hoggets required: _____

Price bracket requested (\$500-\$700): _____

TEASERS available \$300 each - required numbers: _____

Comment/Special requirements _____